



Parents' Guide



Peppa Pig Learn & Explore Tablet



INTRODUCTION

Thank you for purchasing the Peppa Pig Learn & Explore Tablet! This tablet includes six fun activities that teach language, maths, logic and more. Explore and learn with Peppa Pig, her family and friends in a fun-filled adventure.



- | | |
|---------------------|-----------------------|
| ① LCD Screen | ⑧ Peppa Pig Button |
| ② Mummy Pig Button | ⑨ Activity Buttons |
| ③ George Pig Button | ⑩ Volume Button |
| ④ On/Off Button | ⑪ Arrow Buttons |
| ⑤ Letter Buttons | ⑫ Music On/Off Button |
| ⑥ Number Buttons | ⑬ OK Button |
| ⑦ Daddy Pig Button | |

INCLUDED IN THIS PACKAGE

- Peppa Pig Learn & Explore Tablet
- Parents' Guide

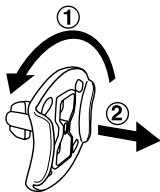
WARNING

All packing materials such as tape, plastic sheets, packaging locks, removable tags, cable ties, cords and packaging screws are not part of this toy, and should be discarded for your child's safety.

NOTE

Please keep this Parents' Guide as it contains important information.

Unlock the packaging locks

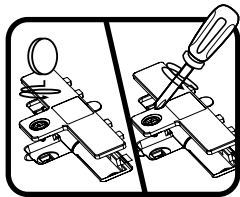


- ① Rotate the packaging locks 90 degrees anticlockwise.
- ② Pull out the packaging locks and discard.

INSTRUCTIONS

BATTERY REMOVAL AND INSTALLATION

1. Make sure the unit is turned OFF.
2. Locate the battery cover on the back of the unit.
Use a coin or screwdriver to loosen the screw.
3. If used batteries are present, remove these batteries from the unit by pulling up on one end of each battery.
4. Install 2 new 'AA' (AM-3/LR6) batteries following the diagram inside the battery box.
(For best performance, alkaline batteries or fully charged Ni-MH rechargeable batteries are recommended).
5. Replace the battery cover and tighten the screw to secure.



WARNING

Adult assembly required for battery installation.
Keep batteries out of reach of children.

IMPORTANT: BATTERY INFORMATION

- Insert batteries with the correct polarity (+ and -).
- Do not mix old and new batteries.
- Do not mix alkaline, standard (carbon-zinc) or rechargeable batteries.
- Only batteries of the same or equivalent type as recommended are to be used.
- Do not short-circuit the supply terminals.
- Remove batteries during long periods of non-use.
- Remove exhausted batteries from the toy.
- Dispose of batteries safely. Do not dispose of batteries in fire.

RECHARGEABLE BATTERIES

- Remove rechargeable batteries from the toy before charging.
- Rechargeable batteries are only to be charged under adult supervision.
- Do not charge non-rechargeable batteries.

Disposal of batteries and product



The crossed-out wheelee bin symbols on products and batteries, or on their respective packaging, indicates they must not be disposed of in domestic waste as they contain substances that can be damaging to the environment and human health.

The chemical symbols Hg, Cd or Pb, where marked, indicate that the battery contains more than the specified value of mercury (Hg), cadmium (Cd) or lead (Pb) set out in the Batteries and Accumulators Regulation.



The solid bar indicates that the product was placed on the market after 13th August, 2005.

Help protect the environment by disposing of your product or batteries responsibly.

VTech® cares for the planet.

Care for the environment and give your toy a second life by disposing of it at a small electricals collection point so all its materials can be recycled.

In the UK:

Visit www.recyclenow.com to see a list of collection points near you.

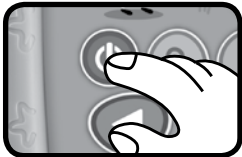
In Australia & New Zealand:

Check with your local council for kerbside collections.

PRODUCT FEATURES

1. On/Off Button

Press the **On/Off Button**  to turn the unit **On**. Press the **On/Off Button** again to turn the unit **Off**.



2. Volume Button

Press the **Volume Button**  to adjust the sound level.



3. Activity Buttons

Press any of the six **Activity Buttons** to learn and explore.



4. Letter Buttons

Press the **Letter Buttons** to learn letters, phonics and objects.



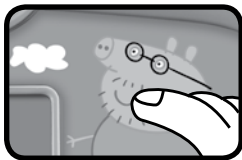
5. Number Buttons

Press the **Number Buttons** to learn numbers and answer number-related questions.



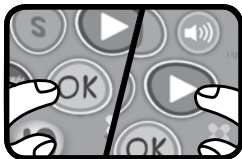
6. Character Buttons

Press the four **Character Buttons** to hear Peppa Pig and her family say playful phrases from the show.



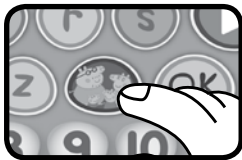
7. OK & Arrow Buttons

Press the **Arrow Buttons** to navigate on the screen or to select an option, then press the **OK Button** to confirm your choice.



8. Music On/Off Button

Press this button to turn the background music **On** or **Off**.



9. Automatic Shut-Off

To preserve battery life, the **Peppa Pig Learn & Explore Tablet** will automatically shut off after several minutes of inactivity. The unit can be turned on again by pressing the **On/Off Button**.

NOTE

If the unit powers down or if the light fades out during play, please install a new set of batteries.

ACTIVITIES



1. Letter and Number Van

Press the **Letter Buttons** or **Number Buttons** to learn about letters, phonics and numbers with Freddy Fox and Mr. Fox.



2. Counting Stars

Help Emily Elephant count how many stars she has.



3. Letter Painting Fun

Press a letter to see what object Peppa Pig has drawn for each letter of the alphabet.



4. Music Time

Help Candy Cat host a music party by adding fun sound effects to the melodies with any number or character button.



5. Hide-and-Seek

Help Peppa Pig find out who hid behind the bush in a game of hide-and-seek with family and friends.



6. Picnic Time

Help Daddy Pig splash through muddy puddles by using the left and right **Arrow Buttons** to get to the family's picnic spot.

CARE & MAINTENANCE

1. Keep the unit clean by wiping it with a slightly damp cloth.
2. Keep the unit out of direct sunlight and away from any direct heat sources.
3. Remove the batteries when the unit will not be in use for an extended period of time.
4. Do not drop the unit on hard surfaces and do not expose the unit to moisture or water.

TROUBLESHOOTING

If for some reason the unit stops working or malfunctions, please follow these steps:

1. Please turn the unit **OFF**.
2. Interrupt the power supply by removing the batteries.
3. Let the unit stand for a few minutes, then replace the batteries.
4. Turn the unit **ON**. The unit should now be ready to play with again.
5. If the unit still does not work, install a brand new set of batteries.

If the problem persists, please contact our Consumer Services Department and a service representative will be happy to help you.

CONSUMER SERVICES

Creating and developing VTech® products is accompanied by a responsibility that we at VTech® take very seriously. We make every effort to ensure the accuracy of the information, which forms the value of our products. However, errors sometimes can occur. It is important for you to know that we stand behind our products and encourage you to call our Consumer Services Department with any problems and/or suggestions that you might have. A service representative will be happy to help you.

UK Customers:

Phone: 0330 678 0149 (from UK) or +44 330 678 0149 (outside UK)

Website: www.vtech.co.uk/support

Australian Customers:

Phone: 1800 862 155

Website: support.vtech.com.au

NZ Customers:

Phone: 0800 400 785

Website: support.vtech.com.au

PRODUCT WARRANTY/ CONSUMER GUARANTEES

UK Customers:

Read our complete warranty policy online at vtech.co.uk/warranty.

Australian Customers:

VTECH ELECTRONICS (AUSTRALIA) PTY LIMITED - CONSUMER GUARANTEES

Under the Australian Consumer Law, a number of consumer guarantees apply to goods and services supplied by VTech Electronics (Australia) Pty Limited. Please refer to vtech.com.au/consumerguarantees for further information.

Visit our website for more
information about our products,
downloads, resources and more.

www.vtech.co.uk
www.vtech.com.au

